

## Package files

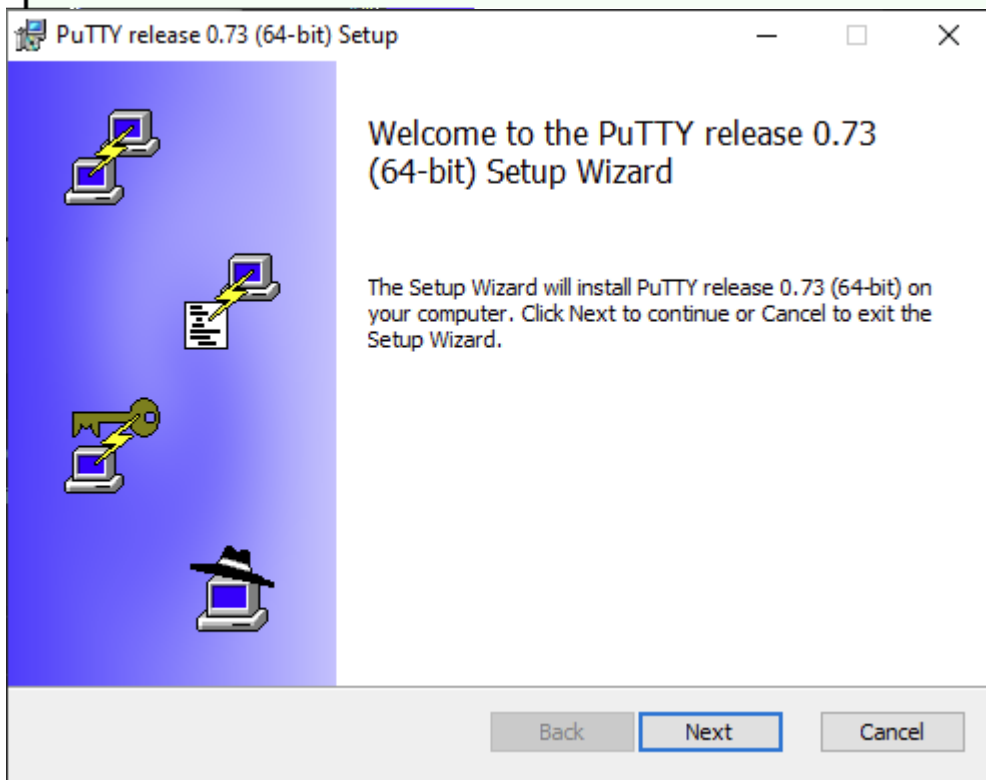
You probably want one of these. They include versions of all the PuTTY utilities.

(Not sure whether you want the 32-bit or the 64-bit version? Read the [FAQ entry](#).)

### MSI ('Windows Installer')

32-bit: [putty-0.73-installer.msi](#) (or by FTP) (signature)

64-bit: [putty-64bit-0.73-installer.msi](#) (or by FTP) (signature)



**PuTTY release 0.73 (64-bit) Setup**

**Destination Folder**  
Click Next to install to the default folder or click Change to choose another.

Install PuTTY release 0.73 (64-bit) to:

C:\Program Files\PuTTY\  
Change...

Back Next Cancel

---

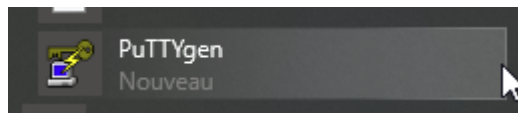
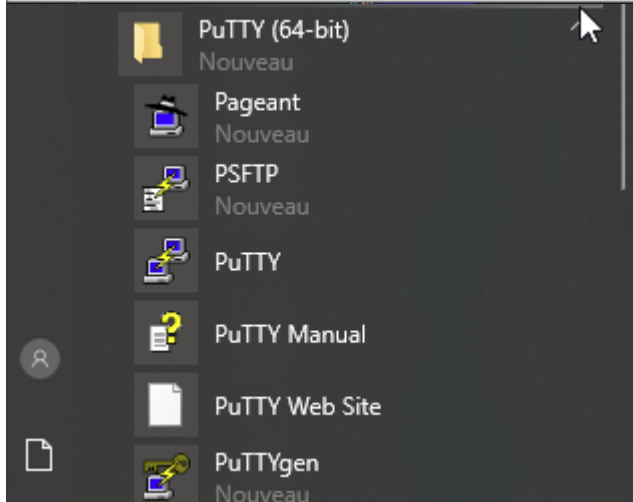
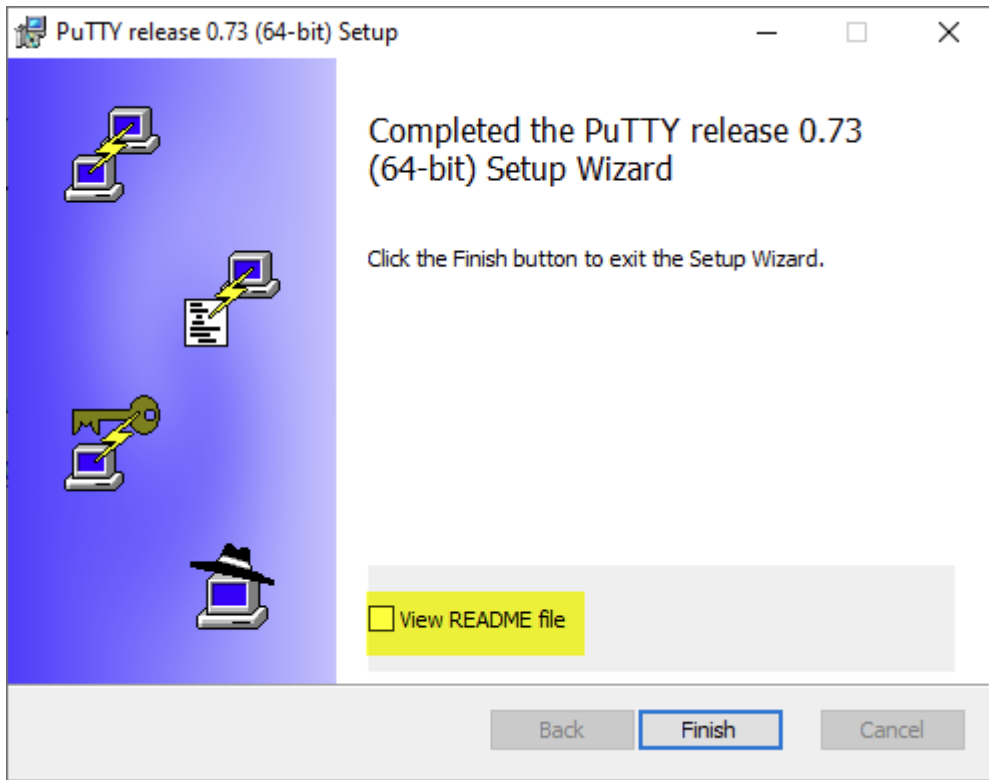
**PuTTY release 0.73 (64-bit) Setup**

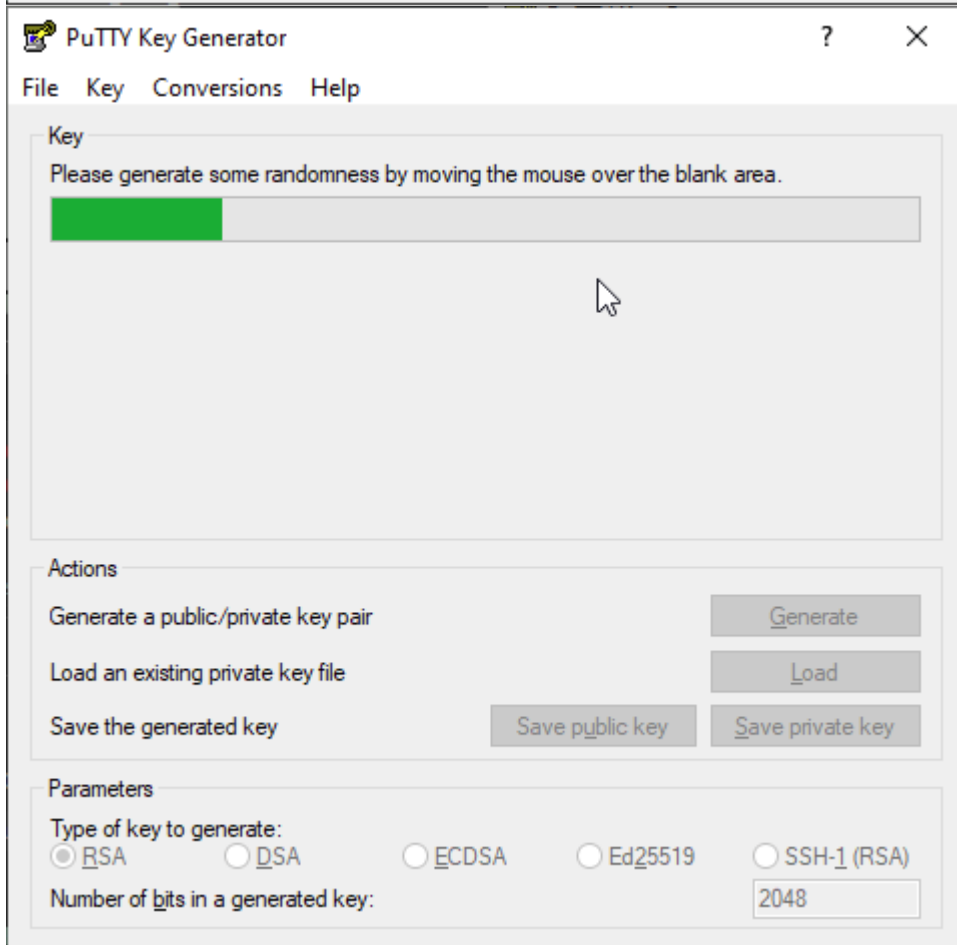
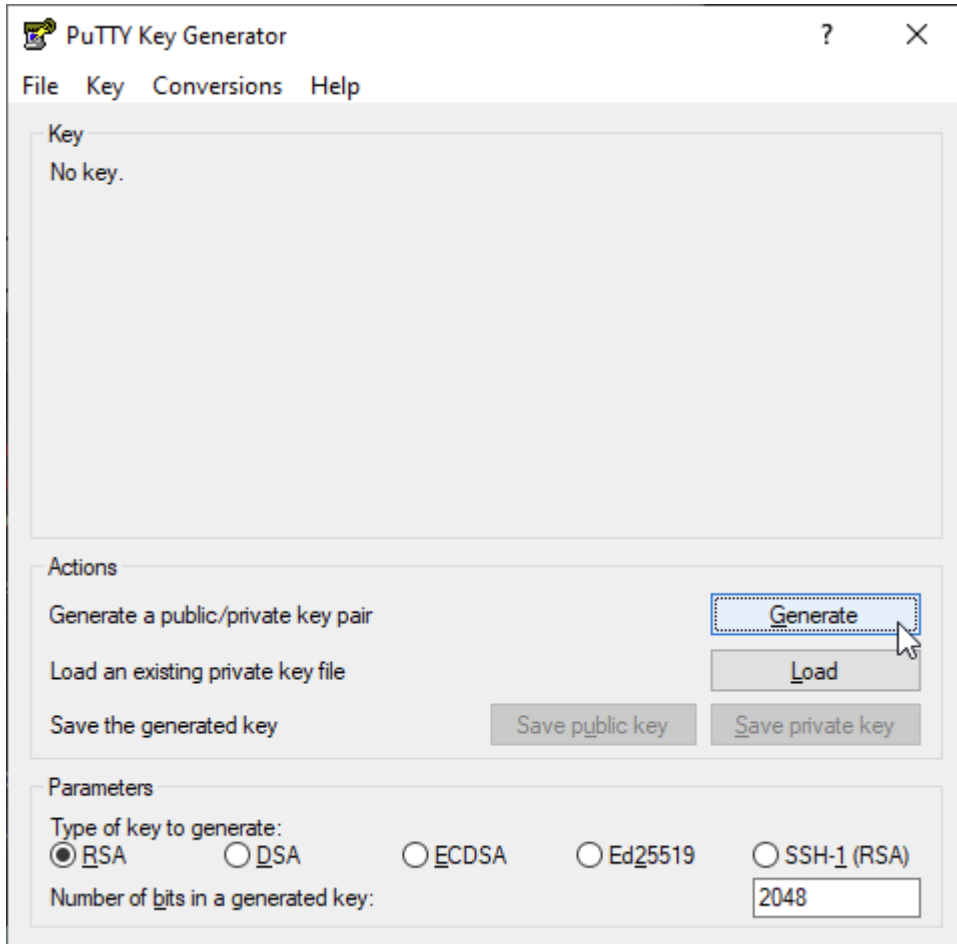
**Product Features**  
Select the way you want features to be installed.

- Install PuTTY files
- Add shortcut to PuTTY on the Desktop
- Put install directory on the PATH for command prompts
- Associate .PPK files with PuTTYgen and Pageant

This feature requires 3934KB on your hard drive.

Back Install Cancel





PuTTY Key Generator

File Key Conversions Help

Key

Public key for pasting into OpenSSH authorized\_keys file:

```
ssh-rsa  
AAAAB3NzaC1yc2EAAAABJQAAQEApxUUVCR/N9NXHoM1nbEZv0V6AW8q2E92b  
AAldub5lwmff4BJeT2mx31KjkHBrEl+jJX+Onr/Sx969gW2ILU94aV2zETna9h  
+yNg77Z3AqdGF1DpNmROgHEOu25zoc+e0WTzR  
+YM0TBIQIYfmQovh8pxeES3T3oP1fmOBwppk/SNaJcTPNe57Ji7N9ng6HDtJDRKJZr
```

Key fingerprint: ssh-rsa 2048 cd:f3:c6:96:61:b2:40:3f:b2:84:07:f6:72:97:9f:d5

Key comment: rsa-key-20200320

Key passphrase:

Confirm passphrase:

Actions

Generate a public/private key pair

Load an existing private key file

Save the generated key

Parameters

Type of key to generate:  
 RSA  DSA  ECDSA  Ed25519  SSH-1 (RSA)

Number of bits in a generated key: 2048

PuTTY Key Generator

File Key Conversions Help

Key

Public key for pasting into OpenSSH authorized\_keys file:

```
ssh-rsa  
AAAAB3NzaC1yc2EAAAABJQAAQEApxUUVCR/N9NXHoM1nbEZv0V6AW8q2E92b  
AAldub5lwmff4BJeT2mx31KjkHBrEl+jJX+Onr/Sx969gW2ILU94aV2zETna9h  
+yNg77Z3AqdGF1DpNmROgHEOu25zoc+e0WTzR  
+YM0TBIQIYfmQovh8pxeES3T3oP1fmOBwppk/SNaJcTPNe57Ji7N9ng6HDtJDRKJZr
```

Key fingerprint: ssh-rsa 2048 cd:f3:c6:96:61:b2:40:3f:b2:84:07:f6:72:97:9f:d5

Key comment: @unige.ch

Key passphrase: .....

Confirm passphrase: .....

Actions

Generate a public/private key pair

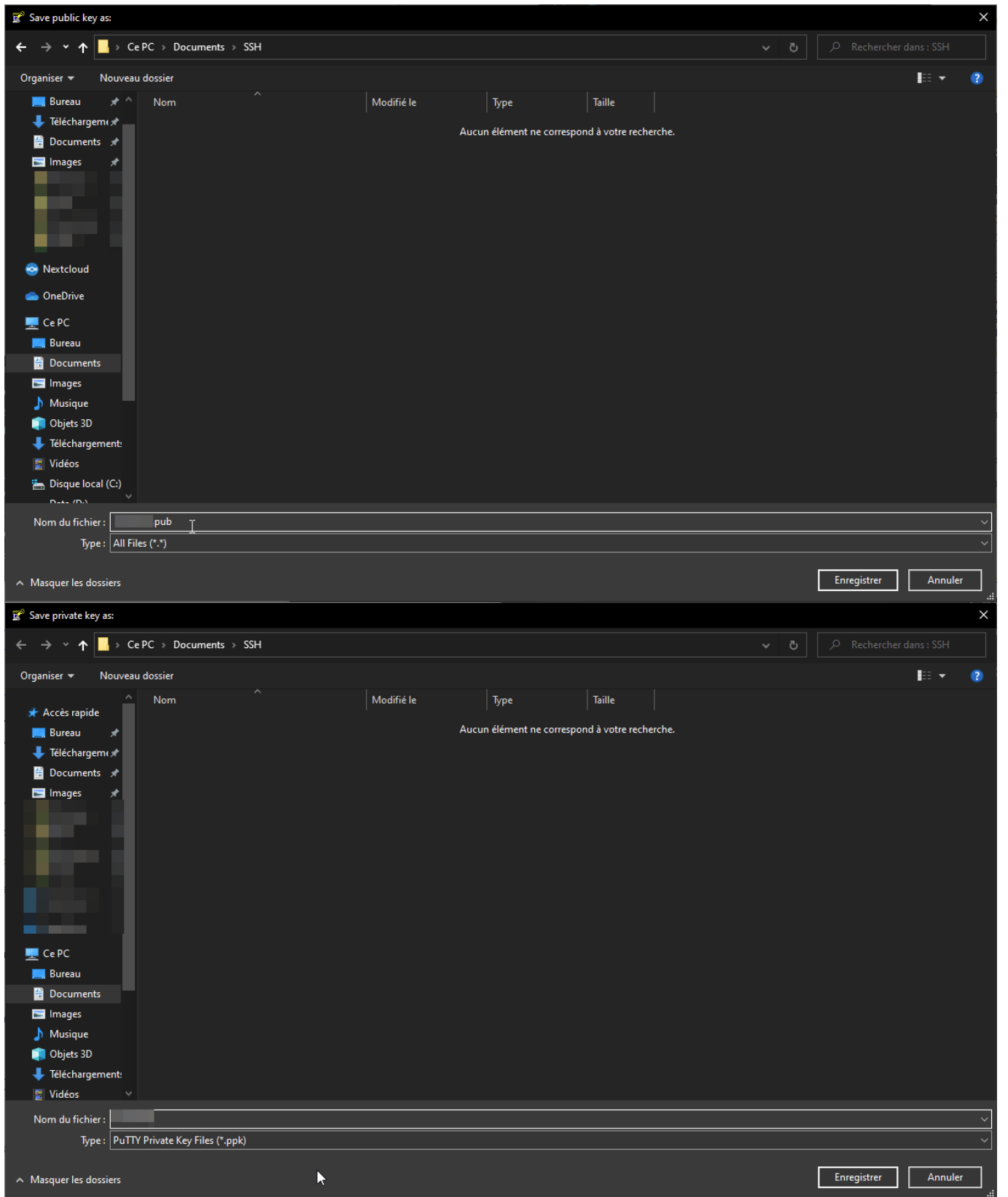
Load an existing private key file

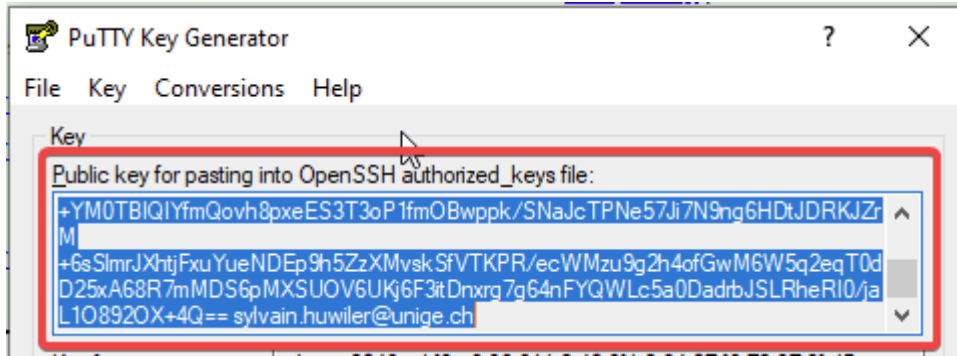
Save the generated key

Parameters

Type of key to generate:  
 RSA  DSA  ECDSA  Ed25519  SSH-1 (RSA)

Number of bits in a generated key: 2048





From:  
<https://doc.eresearch.unige.ch/> - **eResearch Doc**

Permanent link:  
<https://doc.eresearch.unige.ch/iaas/createsshkey?rev=1590483018>

Last update: **2025/06/11 12:27**

